



Hornsea Project Four

Historic Environment Photobook

Deadline: 5, Date: 20 June 2022

Document Reference: G5.23

Revision: 01

Prepared Royal HaskoningDHV, May 2022
Checked Royal HaskoningDHV, May 2022
Accepted Thomas Watts, Orsted, June 2022
Approved Julian Carolan, Orsted, June 2022

G5.23
Ver. no. A

Revision Summary

<i>Rev</i>	<i>Date</i>	<i>Prepared by</i>	<i>Checked by</i>	<i>Approved by</i>
01	23/05/2022	Royal HaskoningDHV	Thomas Watts, Orsted	Julian Carolan, Orsted

Revision Change Log

<i>Rev</i>	<i>Page</i>	<i>Section</i>	<i>Description</i>
01	N/A	N/A	Original for Submission

Table of Contents

1	Introduction.....	5
1.1	Purpose of this document.....	5
2	Supplementary Photographs.....	7
2.1	Photograph Location 1.....	7
2.2	Photograph Location 2.....	9
2.3	Photograph Location 3.....	11
2.4	Photograph Location 4.....	13
2.5	Photograph Location 5.....	16
2.6	Photograph Location 6.....	18
2.7	Photograph Location 7.....	20
2.8	Photograph Location 8.....	21
2.9	Photograph Location 9.....	23
2.10	Additional Imagery.....	24

List of Plates

Plate 1:	View from Dunswell Road, looking west.....	7
Plate 2:	Panoramic view from Dunswell Road, looking west.....	8
Plate 3:	View from the north-east boundary of the OnSS location, looking south-west.....	9
Plate 4:	View from the north-east boundary of the OnSS location, looking south.....	10
Plate 5:	Panoramic view from the north-east boundary of the OnSS location, looking south-west..	10
Plate 6:	View from Ancient Woodland, looking south-east (1).....	11
Plate 7:	View from Ancient Woodland, looking south-east (2).....	12
Plate 8:	View from northern boundary of OnSS location, looking south-east.....	13
Plate 9:	View from northern boundary of OnSS location, looking south.....	14
Plate 10:	View from northern boundary of OnSS location, looking south-west.....	15
Plate 11:	View from within OnSS location, looking south-west.....	16
Plate 12:	View from within OnSS location, looking south.....	17
Plate 13:	View across southern extent of OnSS location, looking east.....	18
Plate 14:	View across western extent of OnSS location, looking north-west.....	19
Plate 15:	View of OnSS south of Burn Park Farm, looking north-east.....	20
Plate 16:	View towards Burn Park Farm with OnSS location to the north.....	21
Plate 17:	View towards OnSS location, looking north.....	22
Plate 18:	View towards OnSS location, looking north-east.....	23
Plate 19:	Panoramic view of OnSS location from Burn Park Cottages, looking north.....	23

Plate 20: Image taken from Creyke Beck Power Station (Google Maps Street View Photo Sphere, July 2017)..... 24

List of Figures

Figure 1: Location of supplementary photographs with views towards OnSS..... 6

Glossary

Term	Definition
Hornsea Project Four Offshore Wind Farm	The term covers all elements of the project (i.e. both the offshore and onshore). Hornsea Four infrastructure will include offshore generating stations (wind turbines), electrical export cables to landfall, and connection to the electricity transmission network. Hereafter referred to as Hornsea Four.
Onshore substation (OnSS)	Comprises a compound containing the electrical components for transforming the power supplied from Hornsea Project Four to 400 kV and to adjust the power quality and power factor, as required to meet the UK Grid Code for supply to the National Grid. If a HVDC system is used the OnSS will also house equipment to convert the power from HVDC to HVAC.
Orsted Hornsea Project Four Limited	The Applicant for the proposed Hornsea Project Four Offshore Wind Farm Development Consent Order (DCO).

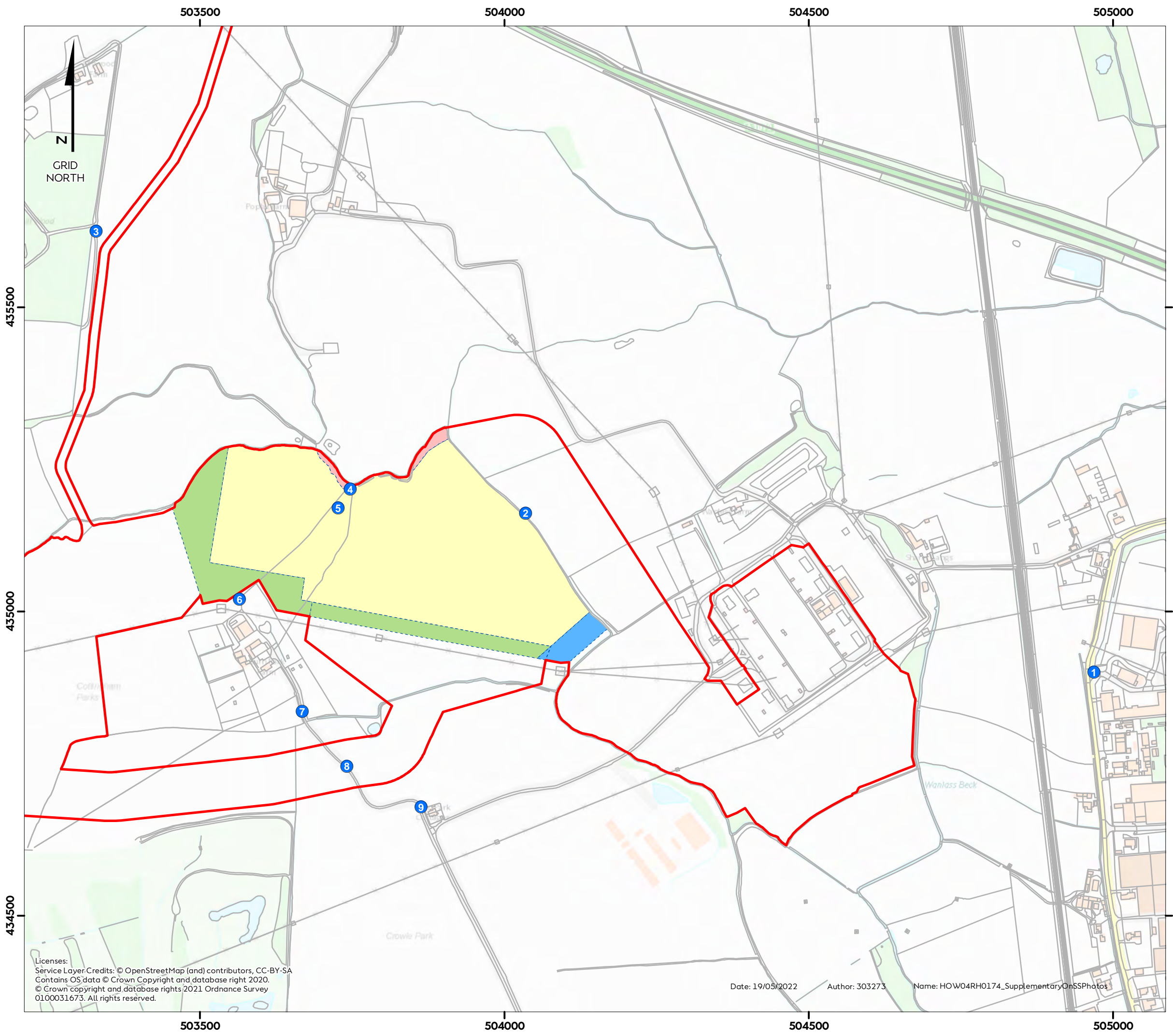
Acronyms

Term	Definition
LVIA	Landscape and Visual Impact Assessment
OnSS	Onshore Substation
PRoW	Public Right of Way
ZTV	Zone of Theoretical Visibility

1 Introduction

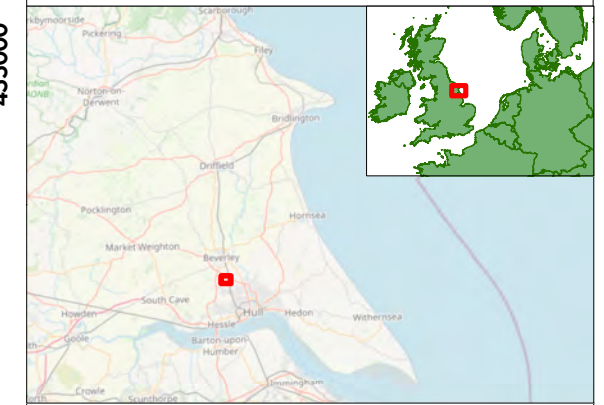
1.1 Purpose of this document

- 1.1.1.1 In response to Historic England's submission at Deadline Four for Hornsea Project Four, and specifically regarding L.V.1.2 (REP4-051), supplementary photographs from around the location of the Hornsea Four Onshore Substation (OnSS) are provided in [Section 2](#) of this document.
- 1.1.1.2 Several photographs that provide a general view around the OnSS were taken as part of the historic setting assessment site visits (undertaken between 28 – 30 November 2018 and 11 – 15 February 2019). Only those relevant to the heritage setting assessment were included in [A6.5.1 Historic Environment Desk Based Assessment Part A \(APP-116\)](#), [A6.5.1 Historic Environment Desk Based Assessment Part B \(APP-117\)](#) and [A6.5.1 Historic Environment Desk Based Assessment Part C \(APP-118\)](#) i.e., photographs taken from the heritage assets identified from the Landscape and Visual Impact Assessment (LVIA) Zone of Theoretical Visibility (ZTV) as having potential views of the OnSS.
- 1.1.1.3 The photographs presented in this document are provided to supplement those submitted as part of [A6.5.1 Historic Environment Desk Based Assessment Part A \(APP-116\)](#), [A6.5.1 Historic Environment Desk Based Assessment Part B \(APP-117\)](#) and [A6.5.1 Historic Environment Desk Based Assessment Part C \(APP-118\)](#), [A3.4 Landscape and Visual \(APP-028\)](#) and [A6.4.1 Landscape and Visual Resources Wireframes and Photomontages \(APP-115\)](#).
- 1.1.1.4 It should be noted that the photographs presented in [A6.5.1 Historic Environment Desk Based Assessment Part A \(APP-116\)](#), [A6.5.1 Historic Environment Desk Based Assessment Part B \(APP-117\)](#) and [A6.5.1 Historic Environment Desk Based Assessment Part C \(APP-118\)](#) and the photographs included within this document were used to inform the historic setting assessment; however, the photographs presented in the technical annexes were selected as providing the best representation to inform and support and the historic setting assessment. Consequently, the historic setting assessment (as presented in [A6.5.1 Historic Environment Desk Based Assessment Part A \(APP-116\)](#), [A6.5.1 Historic Environment Desk Based Assessment Part B \(APP-117\)](#) and [A6.5.1 Historic Environment Desk Based Assessment Part C \(APP-118\)](#)) was not restricted by using information (i.e., photographs) of views obtained from publicly accessible locations (i.e., Public Rights of Way (PRoW)). It should also be noted that the supplementary photographs provided in this document do not alter the position and/or the conclusions presented in the relevant application documents.
- 1.1.1.5 The locations of the supplementary photographs provided in [Section 2](#) are shown on [Figure 1](#).



Hornsea Four
Figure 1
 Location of supplementary
 photographs with views towards OnSS.

- Order Limits
- Photo Location
- Attenuation Area
- Existing Landscaping
- Landscape Mitigation Area
- Substation Permanent Space



Coordinate system: British National Grid
 Scale@A3: 1:6,000
 0 100 200 300 Metres
 0 100 200 300 400 Yards

REV	REMARK	DATE
1	First Issue	19/05/2022

Licenses:
 Service Layer Credits: © OpenStreetMap (and) contributors, CC-BY-SA
 Contains OS data © Crown Copyright and database right 2020.
 © Crown copyright and database rights 2021 Ordnance Survey
 0100031673. All rights reserved.

Date: 19/05/2022 Author: 303273 Name: HOW04RH0174_SupplementaryOnSSPhotos

Title: Supplementary OnSS Photos
 Document no: HOW04RH0174
 Created by: AZ
 Checked by: SM
 Approved by: CS




2 **Supplementary Photographs**

2.1 **Photograph Location 1**



Plate 1: View from Dunswell Road, looking west.



Plate 2: Panoramic view from Dunswell Road, looking west.

2.2 Photograph Location 2



Plate 3: View from the north-east boundary of the OnSS location, looking south-west.



Plate 4: View from the north-east boundary of the OnSS location, looking south.



Plate 5: Panoramic view from the north-east boundary of the the OnSS location, looking south-west.

2.3 Photograph Location 3



Plate 6: View from Ancient Woodland, looking south-east (1).



Plate 7: View from Ancient Woodland, looking south-east (2).

2.4 Photograph Location 4



Plate 8: View from northern boundary of OnSS location, looking south-east.



Plate 9: View from northern boundary of OnSS location, looking south



Plate 10: View from northern boundary of OnSS location, looking south-west

2.5 Photograph Location 5



Plate 11: View from within OnSS location, looking south-west.



Plate 12: View from within OnSS location, looking south.

2.6 Photograph Location 6



Plate 13: View across southern extent of OnSS location, looking east.



Plate 14: View across western extent of OnSS location, looking north-west.

2.7 Photograph Location 7



Plate 15: View of OnSS south of Burn Park Farm, looking north-east.

2.8 Photograph Location 8



Plate 16: View towards Burn Park Farm with OnSS location to the north.



Plate 17: View towards OnSS location, looking north.



Plate 18: View towards OnSS location, looking north-east

2.9 Photograph Location 9



Plate 19: Panoramic view of OnSS location from Burn Park Cottages, looking north.

2.10 Additional Imagery

2.10.1.1 An aerial image taken to the south of the OnSS from Creyke Beck Power Station, during its construction is presented below ([Plate 20](#)).

2.10.1.2 This image is taken from Google Maps Street View Photo Sphere. Further review of the photo sphere can be undertaken at the following web link:

[REDACTED]



Plate 20: Image taken from Creyke Beck Power Station (Google Maps Street View Photo Sphere, July 2017).